



"United we, Empower, Nurture and Challenge."

"Wrth uno mae'n ein arfogi i feithrin a herio."

**Year/ Blwyddyn Year 1
2022 - 2023**

Our School Rules

The School Rules are defined by three short statements: **Ready, Respectful, Safe**

Ready

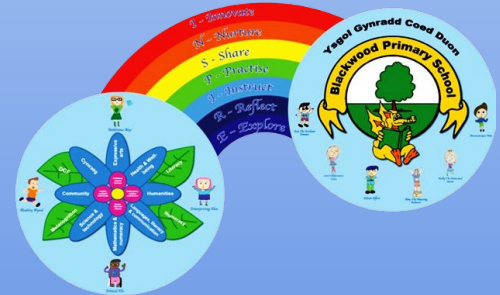
- We are ready to listen, learn and do our best.
- We are ready to work hard and do our best.
- We are ready to be the best we can be.

Respectful

- We will respect all members of the school.
- We will respect our school and its property
- We will show good manners

Safe

- We will behave in a safe manner in all areas of the school
- We will be honest and truthful
- We will keep our hands and feet to ourselves
- We will follow any instructions relating to where to play/learn



Year 1 Team



Mrs Shuker



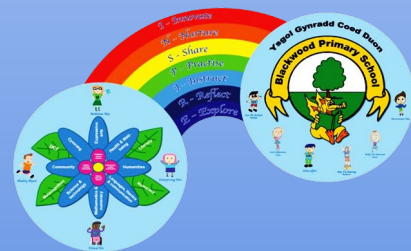
Mrs Thomas



Mrs Gardiner



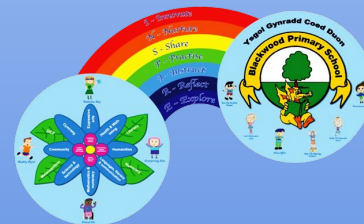
Mrs Sullivan



Year 1 Timetable

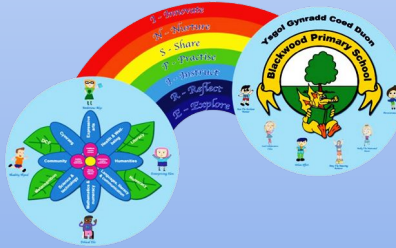
Year 1 / Blwyddyn 1 8:55 - 15:00											
Monday/Wednesday				Thursday/Friday				Tuesday PPA (pm)			
Focus sed room Teach er	Outd oor/C reativ e	Indepe ndent room Teach er		Focus sed room Teach er	Outd oor	Indepe ndent room Teach er		Focus sed room Teach er	Outd oor	Indepe ndent room Teache r	
8:55 - 9:10 - Self reg & Practi se Book s	Tom Readi ng Broo ke Scar lett	Kirst en Readi ng Nelly Skyl ar	Emma Readi ng Charlo tte Cooper	Kate - Settlin g CS, LOW, JW	Tom Interv entio n Broo ke Scar lett	Emm a Interv entio n Char lotte Coop er Danci e Rose	Kirste n Interv entio n Nelly Skyl ar Lyle	Kate - Settlin g CS, LOW and JW	Interv entio n Olivia M Jeorg Eva-R ose	Interv entio n Dani el	Kate Settlin g CS, LOW and JW DG
9:00-9 :10	Assembly			Assembly ELSA (Targeted learners)			Assembly ELSA (Targeted learners)				
9:10-9 :25	Phonics Family 1 - Tom Family 2 - Kirsten Family 3 - Emma (To swap half family)										
9:25-1 0:15	Tom Family 2 Maths	Emma Guided Readin g	Kate - Readin g with Family 2 -Phoni c Interv entions	9:30- 10:15 Family One	Emm a Them e Inspir e Book	Kate - Readi ng with Family 2 - RWI Interv entio n	Tom Family 3 Guided Readi ng	9:25-1 0:15 Family One 1	Tom Family 2 Maths	Guided Readin g	Emma Facilita

Arial											
10:15 - 10:30am - Break small yard - daily noise											
10:45-11:30 Emm a Famil y 1 Facilit ating Indep enden t room											
10:45-11:30 Emm a Famil y 1 Facilit ating Indep enden t room											
Kate - Outdoo r activiti es linked to PIVAT S with CS,LO W JW											
Emm a Threat e Famil y 3											
Kirsten RWI - Family 2											
Tom Intervie ntions Facilit ating Famil y 1											
Kate - Outdoo r activiti es with CS LOW JW											
PPA											
Lunch: Hall 11:40 - 12:15 (ET) 12:15-12:45 Large Yard (Linda and Tina)											
12:50-1:15 - Maths Box TO - Family 1 KS - Family 2 ET - Family 3 Kate - PIVATs number targets											
1:15-2:15 Famil y 3 Litera cy Journ ey											
Emm a Preci sion Teach ing Interv entio ns											
Tom Record ed Maths Famil y 1											
Kate SALT CS LOW JW TLQ EF DG HJM											
1:15-2:15 Litera cy Journ ey Famil y 3											
Tom Guided Reading Interventions Facilitating Famil y 2											
Emma Inspire Famil y 1											
Kate SALT CS LOW JW TLQ EF DG HJM											
1:15-2:15 Litera cy Journ ey Famil y 3											
Tom Guid ed Read ing / Preci sion											
Emma											



Forest School

Miss J Powell



Physical Education

Mr C Grandin





Blackwood Primary School Curriculum

Our Mission Statement:

Empower



Making everyone stronger and more confident, to realise their dreams, taking ownership of their futures

Nurture



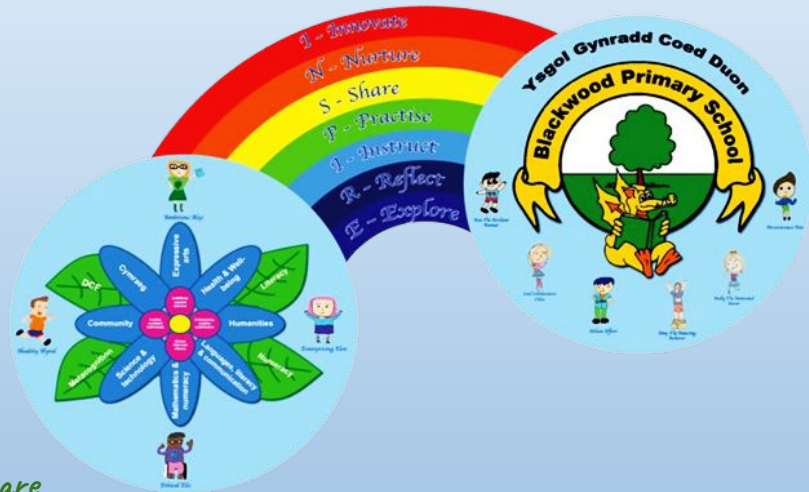
To care for and protect everyone while they are growing

Challenge



To maximise everyone's potential, across all capacities, to constantly improve

The 4 Purposes of Curriculum for Wales



Blackwood Primary School's Four Purpose Characters



Ethical
Elis

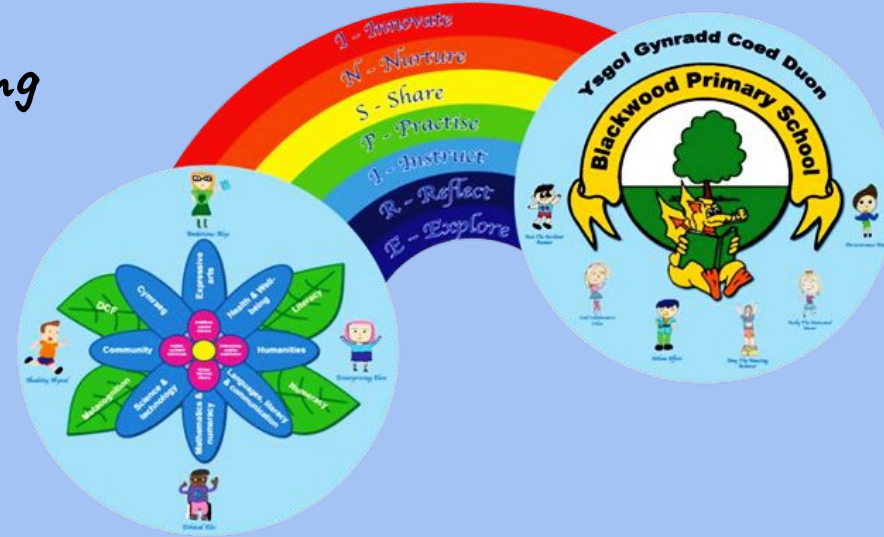
Ambitious
Alys

Healthy
Hywel

Enterprising
Elen

INSPIRE Curriculum - Enabling learning

<i>I</i>	<i>Innovate</i>	<i>Creativity and innovation</i>
<i>N</i>	<i>Nurture</i>	<i>Take care of one another and keeping safe</i>
<i>S</i>	<i>Share</i>	<i>Collaborate with one another</i>
<i>P</i>	<i>Practise</i>	<i>Critical thinking and problem solving</i>
<i>I</i>	<i>Instruct</i>	<i>Instructional/ focused teaching</i>
<i>R</i>	<i>Reflect</i>	<i>Reflect on personal effectiveness</i>
<i>E</i>	<i>Explore</i>	<i>Independent and guided exploration</i>



These seven words occurred most frequently through collaboration with our stakeholders resulting in our INSPIRE curriculum. This is the 'how' we deliver our curriculum!

Four Purposes at the Heart of the Curriculum

Learners were closely involved in the development of characters to reflect the four purposes at the core of the Curriculum for Wales, to ensure that they had ownership and that the four purposes meant something to them.

Ethical Elis

(Elis Idris Collins- the Ethical, Informed Citizen)

Elis can make his own choices. He knows his rights and how to stay safe. He cares for our world. He recycles at home and in school- he is also a member of ECO club. He loves learning Welsh and is proud to live in Wales.



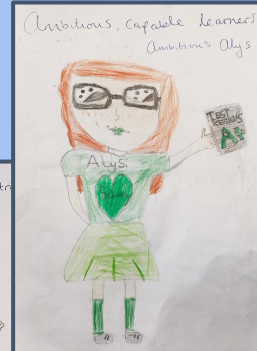
Ambitious Alys

(Alys Catherine Lacey - The Ambitious, Capable Learner)

Alys is ambitious. She wants to be the best she can be! She loves a challenge. She asks lots of questions and loves learning at home and in school. Alys is eager to use her Maths, English and DCF skills to achieve her goals. She is always ready to learn new things and share her ideas.



Learners firstly designed and named the characters, then interpreted the descriptions of each purpose into child speak, writing stories for each character.



- I will always try my best and won't give up
- I will always be ready to learn, learning new things
- I can ask questions and solve problems
- I am good at talking and listening to others
- I can talk about my ideas and what I am learning about
- I can use numbers all around me
- I can show that I understand mathematical ideas
- I can use computers and ipads to find out information
- I can find out about things and say what I think



- I know the difference between right and wrong/ good and bad
- I am always polite and have good values
- I will try new things and won't give up
- I can identify my own and my friends feelings
- I know who to go to if I need help
- I will keep my body fit and healthy
- I will try to keep myself safe
- I will be a good friend to other children
- I will try hard to do things for myself
- I know about healthy and unhealthy food and the importance of exercise
- I will join in with singing, dancing and speaking with my friends



- I can share my thoughts and opinions
- I know my rights
- I can talk about things that I am interested in and that are important to me
- I will do my best to look after my planet
- I know that what I do can make someone happy or sad
- To understand my heritage and culture
- I can talk about the world that I live in and people that are special to me
- I will always try to listen and be kind to others



- I can use my ideas to make and do
- I can solve problems
- I will always try new things
- I can work in a team with my friends
- I can talk about my ideas and my feelings
- I will always help my friends

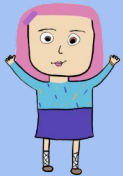




Areas of Learning Experiences



Each of the Areas of Learning and Experience make distinct and strong contributions to developing the four purposes of the curriculum. Taken together, they should define the breadth of the curriculum. They will signify the importance of educational experiences as an integral part of the curriculum, to broaden children and young people's horizons and stimulate their imaginations promoting enjoyment in learning. The education of children and young people should include rich experiences that are valuable in their own right.





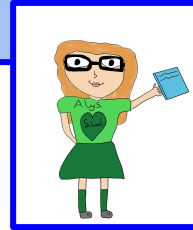
Four purpose stories



Healthy Hywel



ambitious,
capable learners
ready to learn throughout
their lives



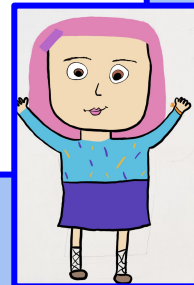
Ambitious Alys

healthy,
confident individuals
ready to lead fulfilling lives
as valued members of
society

enterprising,
creative contributors
ready to play a full part in
life and work

ethical,
informed citizens
ready to be citizens of Wales
and the world

Ethical Elis



Enterprising Elen





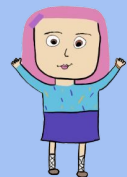
Think, Pair, Share

Cold Calling

AfL

Whole
School

Show me boards





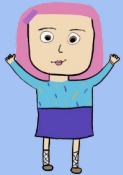
Year 1 AFL strategies implemented through Research and Enquiry



Think-pair-share (TPS) - is a collaborative learning strategy where students work together to solve a problem or answer a question. This strategy requires students to (1) think individually about a topic or answer to a question; and (2) share ideas with classmates

Cold Calling - *This technique helps to address the two main purposes of questioning: making all students think and provisioning feedback to the teacher as to how well things are going. Cold Calling allows you to choose who answers, keeping the whole class involved and giving you better information from which to plan your next responsive steps.*

Show me boards - *Show Me Boards drive your instruction by determining where students are at and where they need to go' (Gray, 2013).*



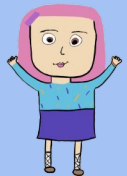
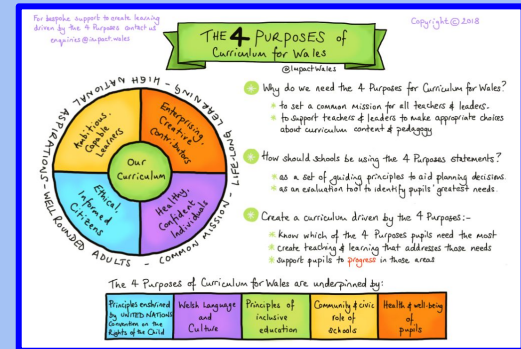
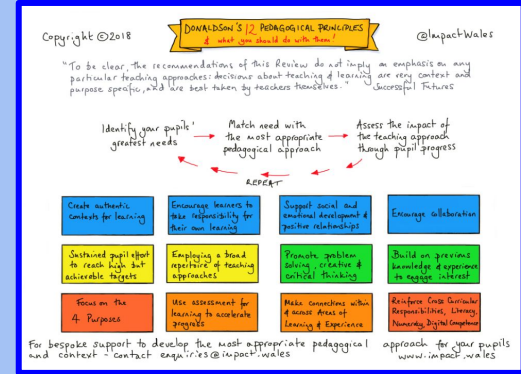


The learning environment is organised to promote independent learning for pupils from nursery to year 6.

Independent Learning Areas in year 1



- Extended Writing
- Cooking Station
- Calm
- ICT
- Green Screen
- Creative
- Clay/Malleable
- Block
- STEM
- Cymraeg
- Reading
- Numeracy
- Curiosity Cube
- Transportable MAD frames to use in any area





Pupil Influence

- Pupil Voice at the beginning of a theme
- Cooking Station
- Authentic Learning Experiences
- Helpwr Heddiw
- Circle-time

Parental Engagement

- Meet and greet sessions - sharing Year 1's curriculum
- Newsletters
- Parent mail system
- Parent consultations - Virtual and in person sessions
- Book looks
- Engagement with provision areas
- Parent Planner to share Learning Experiences
- Twitter



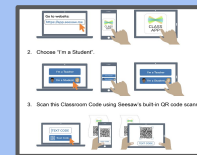


Learning at home



Seesaw

This platform is used independently by pupils to save work created within the learning environment.



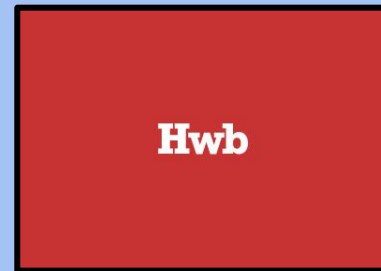
Hwb

Username and passwords are shared with parents, pupils and carers. Pupils can access their accounts at home and in school. Hwb provides rich resources for pupils to access at home.



Oxford Owls

Username and passwords are shared with parents, pupils and carers. Pupils and families access free reading materials, RWI resources and advice for how to support home reading.





Learning at home



https://www.childnet.com/ https://www.net-aware.org.uk/	Offers important E-Safety advice.
Primary Homework Help Online Games For Kids - BBC Bitesize	BBC Bitesize is to help with your homework, revision and learning. Find free videos, step-by-step guides, activities and quizzes by level and subject. Foundation Phase (3-7)
Twinkl	Twinkl Educational Publishing is an online educational publishing house, producing teaching and educational materials.
Reading & Language Arts Games Online Play Free Games on PrimaryGames	Primary games provide free online fun games, puzzle games, and learning games.
National Geographic Kids	National Geographic Kids is a fun website to explore the world.





Learning at home



Useful websites and apps

<u>Topmarks</u>	Topmarks provides engaging educational games and activities in a safe environment for children including 'Hit the Button'.
<u>Oxford Owl</u>	Oxford owl provides expert advice, educational resources and free eBooks to support children's learning at home.
<u>IXL Maths Online maths practice</u>	Gain fluency and confidence in maths! IXL helps students master essential skills at their own pace through fun and interactive questions, built in support and motivating awards.
<u>Fun Kids Online Math Games</u>	
<u>Cool Math Games</u>	
<u>https://www.ruthmiskin.com/en/programmes/phonics/</u>	Read Write Inc (RWI) is a phonics complete literacy programme which helps all children learn to read fluently and at speed so they can focus on developing their skills in comprehension, vocabulary and spelling.





Cooking Station

Rules

- Wash hands before touching any equipment/ food
- Put your apron on
- Read the Plan, Create and Reflect Board.
- Work as team to clean the cooking station...remember that all surfaces must be clean before and after cooking.
- Work carefully with equipment as some maybe hot/ sharp
- Wash dishes and dry them.

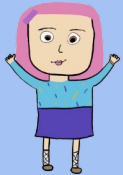


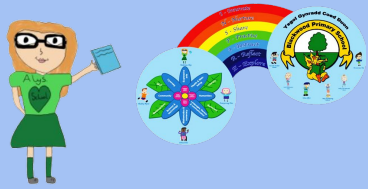


Creative

Rules

- Read the Plan, Create and Reflect Board. Read the instruction board and use any QR codes or pictures to support and guide you.
- Use creative tools or equipment as directed and safely
- Remember the story of Austin's butterfly and perseverance
- Clear away once you have completed your task





Construction

Rules

- Read the Plan, Create and Reflect Board.
- Use any QR codes or pictures to support and guide you.
- Create or share your plan
- Work together to create/build your design
- Make changes to your design
- Reflect and explain your final design.

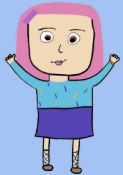




Woodwork

Rules

- Read the Plan, Create and Reflect Board.
- Use any QR codes or pictures to support and guide you.
- Create or share your plan
- Work together to create/build your design
- Make changes to your design
- Reflect and explain your final design.





Writing

Rules

- Read the Plan, Create and Reflect Board Read the instruction board and use any QR codes or pictures to support and guide you.
- Look at the writing examples on the display board
- Use the literacy support materials to help spell and write
- Use the pens/pencils to write
- Put pen lids back onto pens
- Stick your work in the shared writing book when it is finished

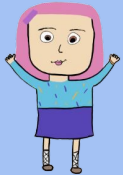




Maths

Rules

- Read the Plan, Create and Reflect Board, Read the instruction board and use any QR codes or pictures to support and guide you.
- Use the maths resources with care
- Put pen lids on white board pens
- Use 100 squares to check number formation





Cymraeg

Rules

- Read the Plan, Create and Reflect Board, Read the instruction board and use any QR codes or pictures to support and guide you.
- Use the welsh language word fans for help
- Use the white boards to practise writing simple welsh phrases
- Use Fflic and Fflac to help practise using welsh language challenges



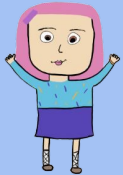


STEM - Science



Rules

- Read the Plan, Create and Reflect Board.
- Read any instructions or listen to the talking peg
- Use any QR codes or pictures to support and guide you.

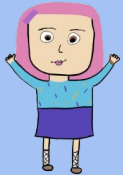
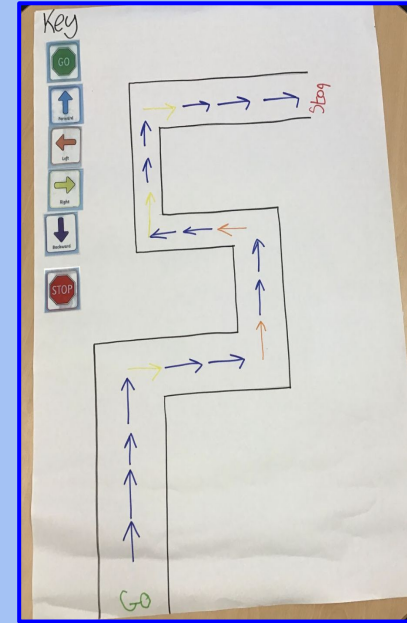




STEM - Technology

Rules

- Read the Plan, Create and Reflect Board,
- Read the instruction board and use any QR codes or pictures to support and guide you.
- Make sure your devices go back on charge when you are finished!

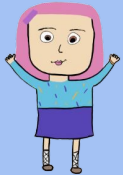




Outdoors

Rules

- Read the blackboards to check what the challenges are
- Use any QR codes or pictures to support and guide you.
- Work as a team.





DCF - ICT

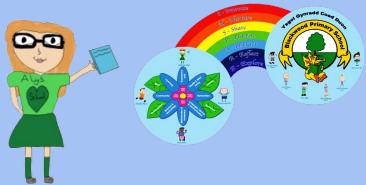


Where do learners keep their DCF/ICT work?

Seesaw

This platform is used independently by pupils to save work created within the learning environment. Class QR codes are displayed throughout Year 1's learning environment. Pupils scan the Class QR code, locate their individual folder then save their work. This work is then verified by the Year 1 staff.





Pedagogy

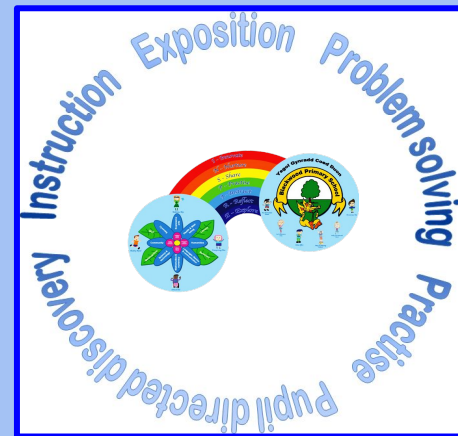


Focussed teaching- children may have whole class or group input and further instructions during the task. Marking grids support the children in knowing what is expected from them through differentiated success criterias.

Plan, Create, Reflex Boards - displayed in the independent learning areas to support children to plan, creative and reflect.

WAGOL - 'What a good one looks like' - These are displayed in provision areas for staff and children to refer to.

Scaffolded support - are provided within areas to help support independent work. Examples of this could be sentence stems, word banks, methods of calculation and exemplar pieces of work.



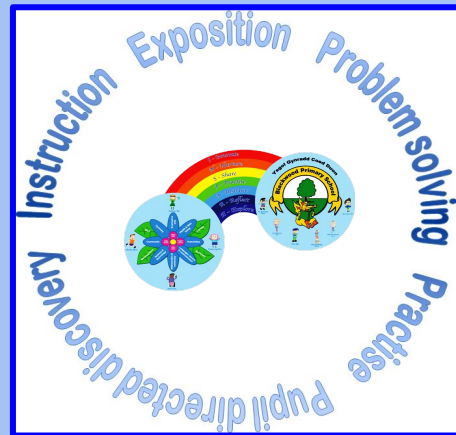


Practice



Year 1 opportunities to practise

- **Spellings**- linked with handwriting skills children are provided with an opportunity to explore high frequency words. Also through the use of RWI Red and Green words used within focussed and challenge areas.
- **Handwriting**- Daily focus for target children, also linked with literacy area. Examples provided in both focus teaching areas providing examples of lists, reports, scene descriptions etc...
- **Reading and comprehension**- use of targeted reading/comprehension blue and yellow boxes.
- **Times Tables**- within numeracy area.



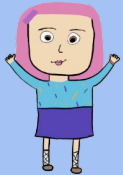
The children have access to practise tasks through free choice and targeted tasks (Daily targeted intervention sessions that are created using year group data)





How do we capture the learning in Year 1?

- Maths, Literacy and Inspire Books
- Sound books
- Independent Packs - Practise Books
- Large Area Shared Books
- Seesaw





Professional Learning in Year 1



Own PL -

RWI

Science and Technology

ALN

Enabling Environments

