



"United we, Empower, Nurture and Challenge."
"Wrth uno mae'n ein arfogi i feithrin a herio."

Blackwood Primary School INSPIRE Curriculum Summary

Our Aims

Mission Statement

“United we Empower, Nurture, Challenge”

Wrth uno mae’n ein argofi i feithrin a herio

Empower

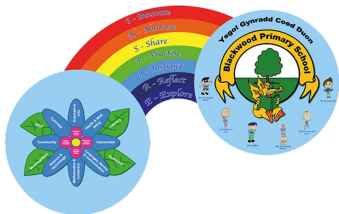
We empower our community to take ownership of their learning and pursue their aspirations.

Nurture

We nurture by fostering an inclusive environment that values empathy and resilience.

Challenge

We challenge individuals to set high standards, encouraging motivation and critical thinking for continuous improvement as lifelong learners.



Our Curriculum

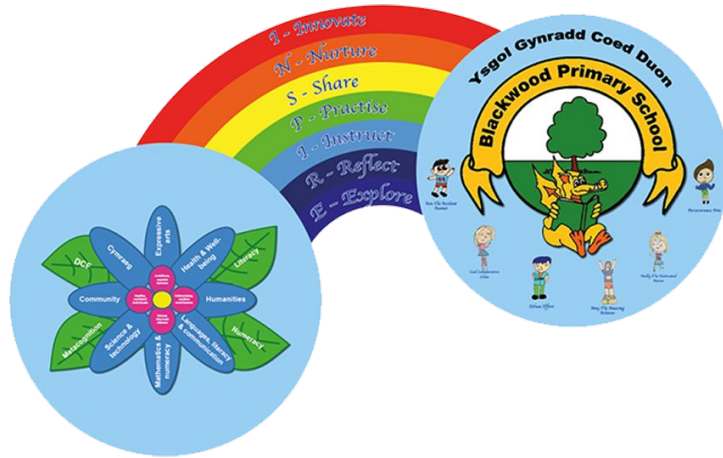


At Blackwood Primary School we are committed to ensuring all our pupils have a broad and balanced curriculum with the opportunity to develop the knowledge, skills and experiences through our INSPIRE curriculum outlined in Curriculum for Wales 2022. The four purposes are the starting point for all decisions on the content and experiences developed as part of the curriculum to support our children and young people to become:

- Ambitious, capable learners, ready to learn throughout their lives
- Enterprising, creative contributors, ready to play a full part in life and work.
- Ethical, informed citizens of Wales and the world.
- Healthy, confident individuals, ready to lead fulfilling lives as valued members of society.

The What Matter Statements and descriptions of learning from all Areas of Learning and Experience (AoLEs) guide staff to determine what matters most for our pupils and provides a context for our themes

Our INSPIRE Curriculum Vision



Our curriculum infographic is designed to present our curriculum in an easy-to-read format. The rainbow features keywords that support the delivery of the curriculum, while the flower outlines the **WHAT** and **WHY** of our educational approach.

This visual representation helps clarify our objectives and the values that underpin our teaching, making it accessible for everyone in our school community.

Our INSPIRE Curriculum Vision



<i>I</i>	<i>Innovate</i>	<i>Creativity and innovation</i>
<i>N</i>	<i>Nurture</i>	<i>Take care of one another and keeping safe</i>
<i>S</i>	<i>Share</i>	<i>Collaborate with one another</i>
<i>P</i>	<i>Practise</i>	<i>Critical thinking and problem solving</i>
<i>I</i>	<i>Instruct</i>	<i>Instructional/ focused teaching</i>
<i>R</i>	<i>Reflect</i>	<i>Reflect on personal effectiveness</i>
<i>E</i>	<i>Explore</i>	<i>Independent and guided exploration</i>

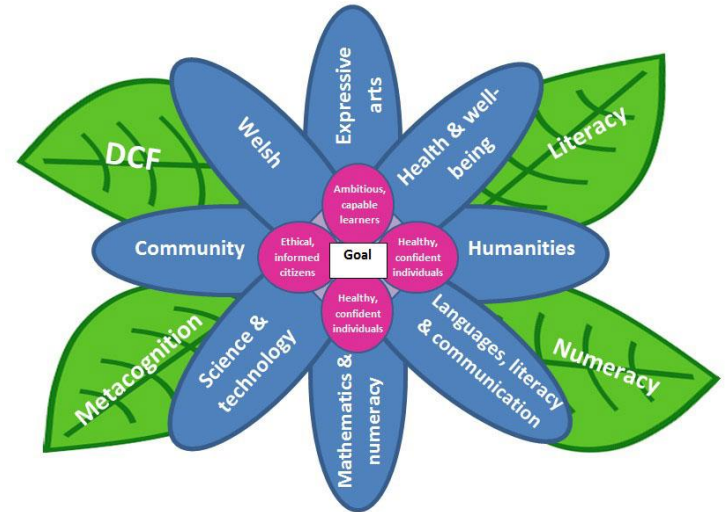
Our INSPIRE principles emphasise the key aspects of teaching and learning at Blackwood Primary School. We prioritise establishing a safe, supportive, and secure environment where trust and positive relationships can flourish, enabling both pupils and staff to thrive.

Our INSPIRE Curriculum Vision

Staff collaborate closely with learners using the “Flower” model to develop Authentic Learning Goals, enabling our pupils to truly 'blossom.'

We share planned curriculum skills with pupils, inviting their input to generate ideas and determine the contexts for the skills they will develop. This approach fosters a sense of empowerment and fulfilment, encouraging full engagement with the learning experiences.

The Authentic Learning Goal remains central to our focus, interconnected with the Four Purposes, the expectations outlined in the Areas of Learning and Experience (AoLEs), and the National Literacy and Numeracy Framework (LNF), as well as the Digital Competence Framework. Metacognition underpins all aspects of the children’s learning, allowing both learners and staff to be innovative while ensuring comprehensive coverage and skill progression within each AoLE and across the curriculum.

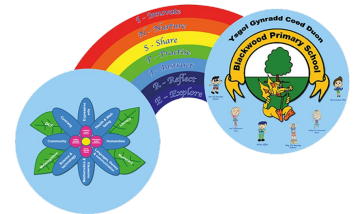


Assessment



At Blackwood Primary School we have developed an effective and robust termly Assessment & Progress Cycle. This involves a range of assessment types including Assessment of Learning and Assessment for Learning. Throughout the APC we use a range of formative and summative assessment processes to enable us to effectively monitor and analyse the progress of each individual pupil.

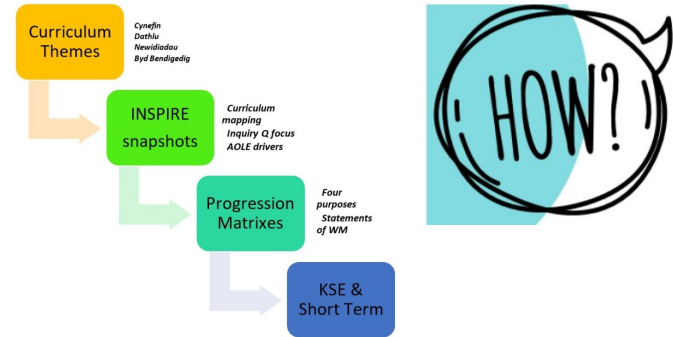
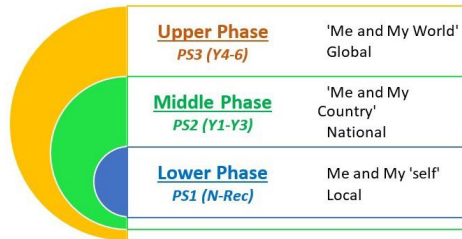
Effective assessment is at the heart of excellent teaching & learning at Blackwood Primary. Assessment is an integral part of a child's learning which leads to more focused and appropriate teaching and enables each child to achieve their potential.



Our INSPIRE Curriculum Lenses

Our curriculum design is based around 3 'lenses' of progression. Each year group develops their knowledge, skills and experiences through a range of different 'big questions' linked to our termly school themes & driver concepts (developed through school cluster work), while also remaining focused on the scope of their specific 'lens' according to age and expectations to ensure learning is authentic and appropriate to pupils in our setting.

The focus of each year groups inquiry and big question is different within each year groups, with these also changing on a two yearly cycle (Y1-Y6) to ensure breadth and depth of learning as each individual progresses throughout the school.

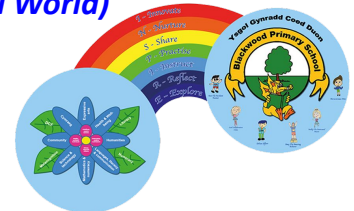


Our termly whole school themes are:

**Autumn term - 'Cynefin'(Belonging) ,
'Dathlu' (Celebrations)**

Spring term – 'Newidiadau' (Changes)

**Summer term – 'Byd Bendigedig'
(Wonderful World)**



Our Learning Characteristics



Ethan Effort



Ron the
Resilient Runner

At Blackwood Primary School pupils use the six Learning Characteristics across the curriculum to help them recognise & celebrate their successes, while identifying ways they can improve their metacognition and further apply their learning on a daily basis through a range of knowledge, skills and experiences.



Collaborative Chloe



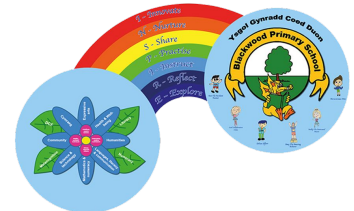
Perseverance Pete



Motivated Molly



Amy the Amazing
Achiever



Teaching & Learning Approaches

WHAT?

At Blackwood Primary School, staff use a range of teaching strategies including the effective use of Assessment For Learning (AFL). These consistent approaches enable pupils to develop their knowledge, skills and understanding to the highest standard as they progress throughout the school.



Teaching & Learning at Blackwood Primary

At Blackwood Primary School, we ensure high standards of teaching and learning enable all groups of pupils to make progress. Pupils work in family groups within each year group, and daily teaching & learning includes:

- ★ **Direct Teaching:** pupils engage closely with staff members who strategically plan lessons to ensure meaningful progress both during each session and over time. This method allows for focused instruction, enabling teachers to address individual learning needs and provide immediate feedback.
- ★ **Focussed Teaching** - focused teaching approach encompasses Maths, Digital, and Literacy, where teachers develop specific skills and knowledge within targeted groups of pupils. This is achieved using a variety of strategies, including differentiation and Assessment for Learning (AFL), to meet the diverse needs of our learners. In addition to core subjects, our INSPIRE curriculum encourages pupils to apply cross-curricular skills from the Literacy and Numeracy Framework (LNF) and Digital Competence Framework (DCF) through a range of experiences across each Area of Learning and Experience (AoLE).
- ★ **Targeted Provision** - Targeted provision ensures that specific pupils receive tailored interventions based on insights gained from ongoing observation, assessment, and evaluation of their progress.
- ★ **Facilitated Learning** - Pupils apply and develop skills more independently through a range of cross-curricular experiences including LNF and DCF. This is linked to focussed teaching and teachers may provide targeted support where appropriate (e.g, scaffolds, WAGOLL, modelling of expectations)
- ★ **Authentic Learning** - Pupils access the authentic learning environments and use the Plan, Create Reflect model to carry out a range of cross-curricular real life experiences, including cooking, woodwork, art, clay modelling, sewing and investigation.

WHAT?

Plan

Create

Reflect



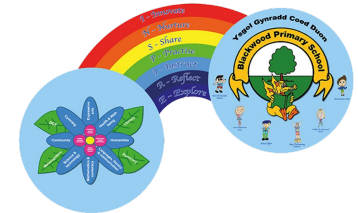
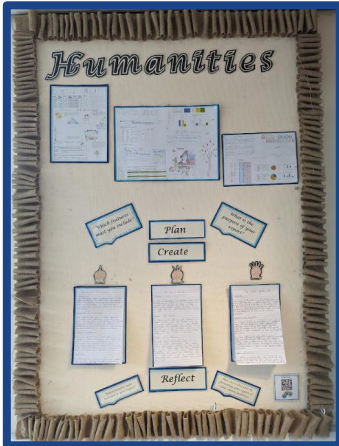
Authentic Learning & Provision

WHAT?



Authentic learning provides pupils with opportunities to develop and refine a range of skills across the curriculum through a balance of recorded and practical learning experiences. Within each authentic area, pupils follow the independent process to guide their learning

- ★ **Plan** - How can you best complete your task? What do you need to include?
- ★ **Create** - Use your plan to complete your task. What can you do to improve your work?
- ★ **Reflect** - How might you improve? What have you learnt from the experience?



Authentic Learning & Provision

At Blackwood Primary School we have developed our authentic provision as an exceptional feature of the school to enable pupils to become ambitious lifelong learners, nurturing independence, confidence and equipping them with the skills needed to contribute within the wider community of Wales and the world.

The Authentic Areas include:

- ★ Cooking - *with kitchen facilities in all year groups*
- ★ Engineering - *woodwork & construction*
- ★ Investigation
- ★ Allotments
- ★ Creative
- ★ Awe & Wonder
- ★ Technology

